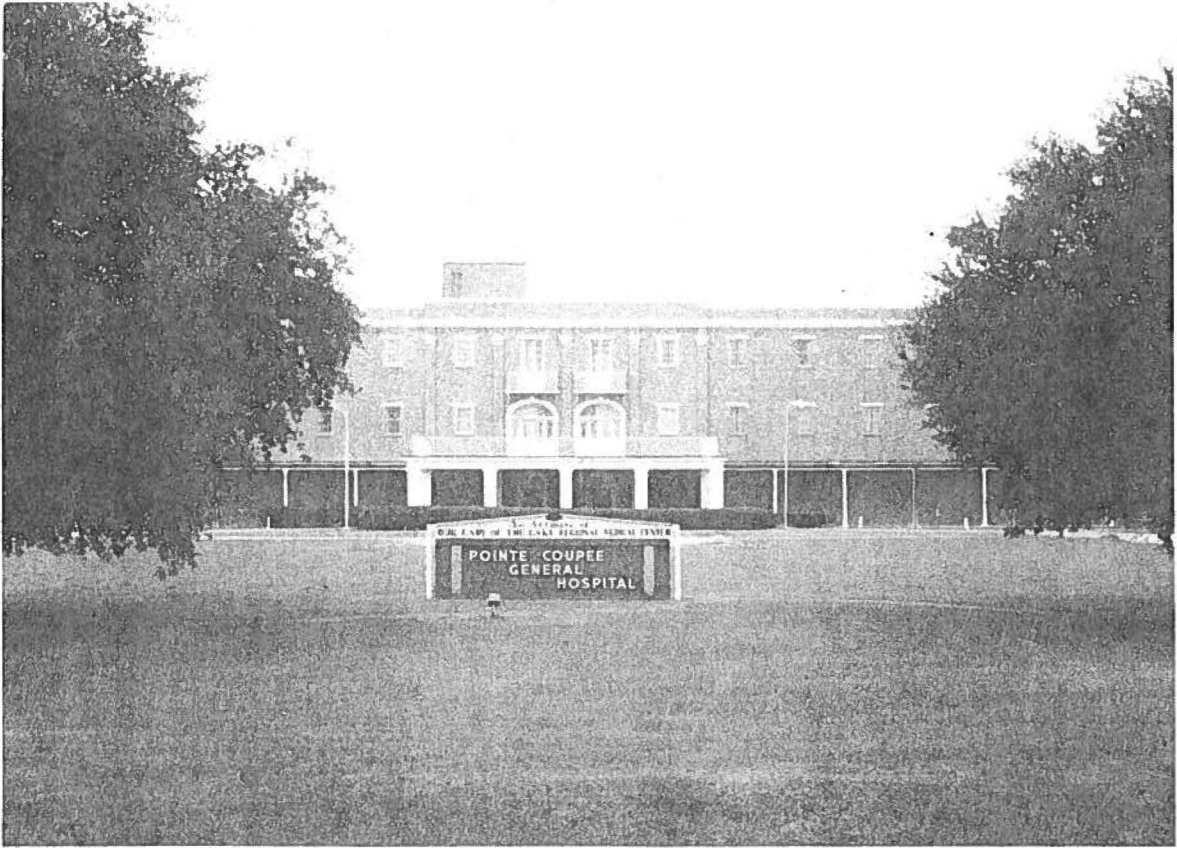


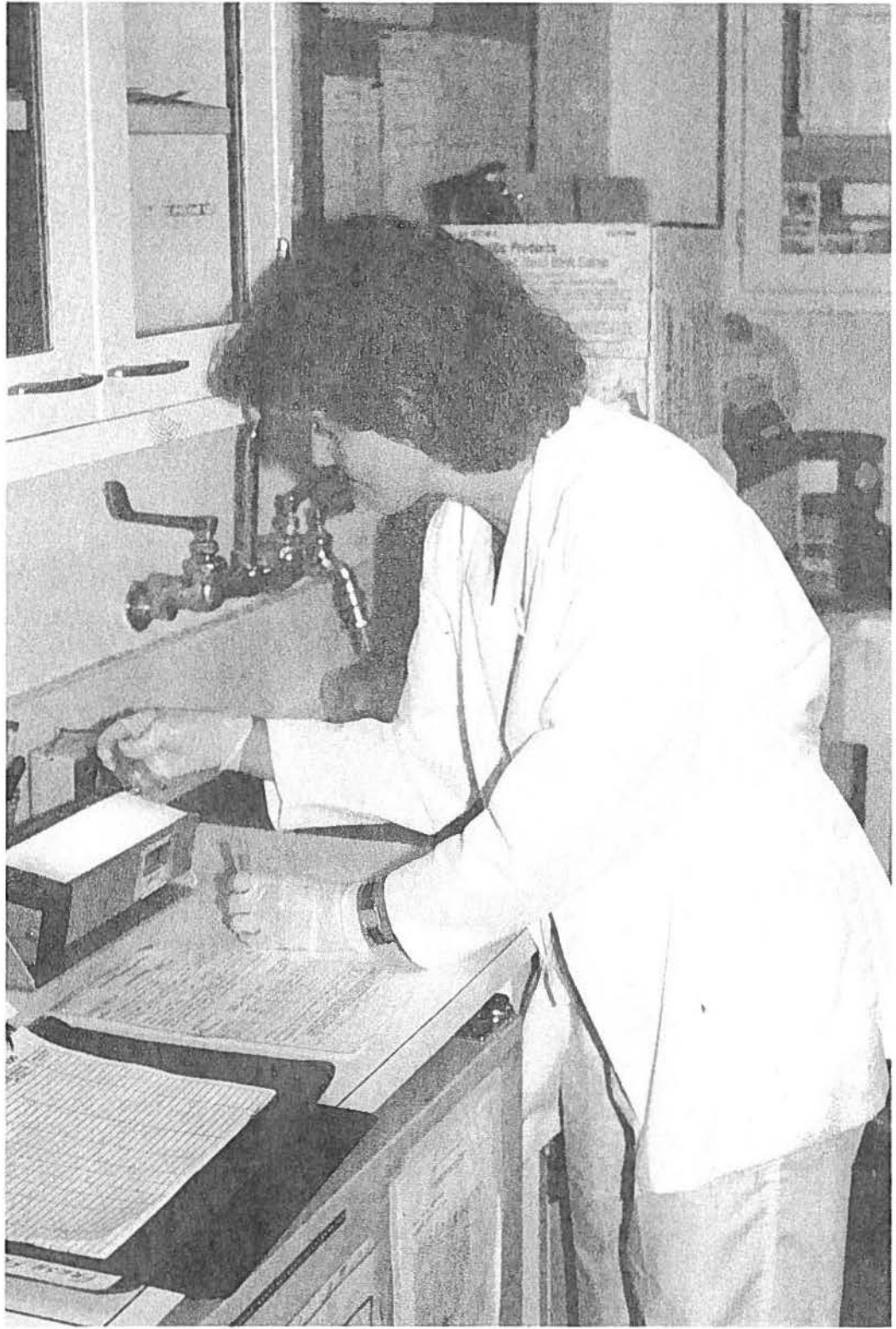
PATIENT GUIDE



POINTE COUPEE GENERAL HOSPITAL

New Roads, Louisiana
*An affiliate of Our Lady
of the Lake Regional
Medical Center*

Equal Opportunity Employer





Welcome

To Pointe Coupee General Hospital

It is the sincere desire of the Hospital Staff, Physicians, the Health Service District Board, and Our Lady of the Lake Regional Medical Center to return you to good health and to make your stay as comfortable as possible. We take pride in our Hospital and we want you to know that as our patient, you are the most important person here.

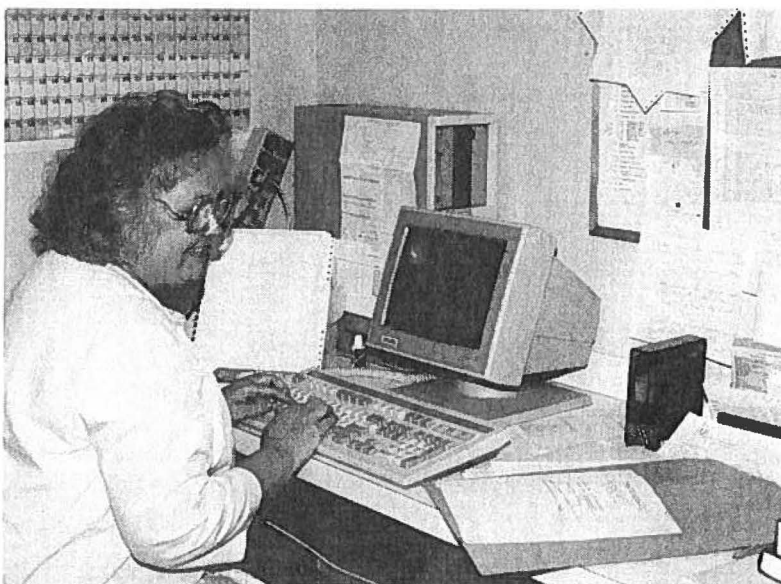
No concern is too small to be of importance to us and your input will help us serve you better. If you have a concern while in the hospital, call extension 101. After you are discharged, call (504) 638-6331, extension 101, Monday through Friday, 8:30 am to 5:00 pm.

This brochure is designed to assist you, your family, and your friends during your stay with us. If you have further question, please ask. Thank you.

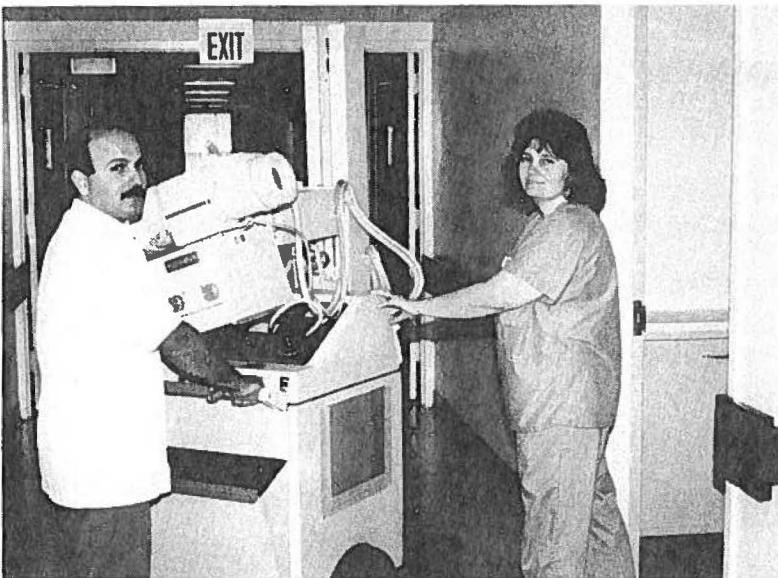
Sincerely,

Joseph J. Gallo, Sr.
Administrator and
Chief Executive Officer

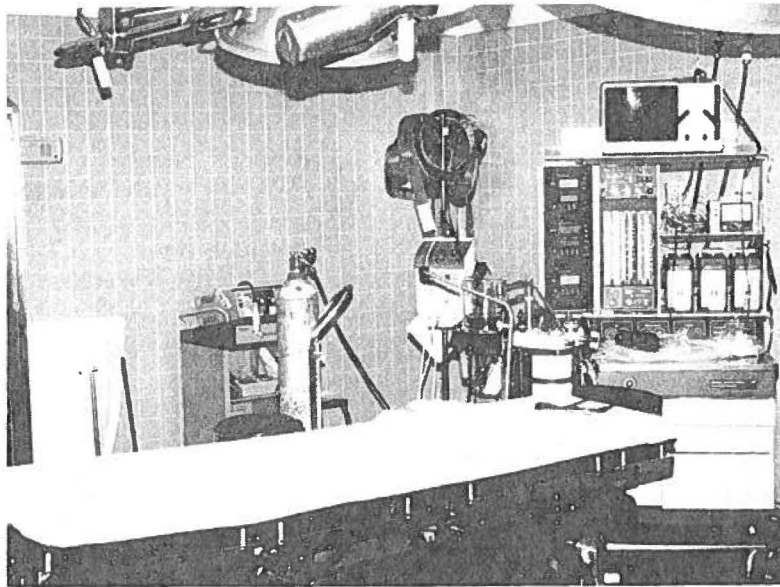
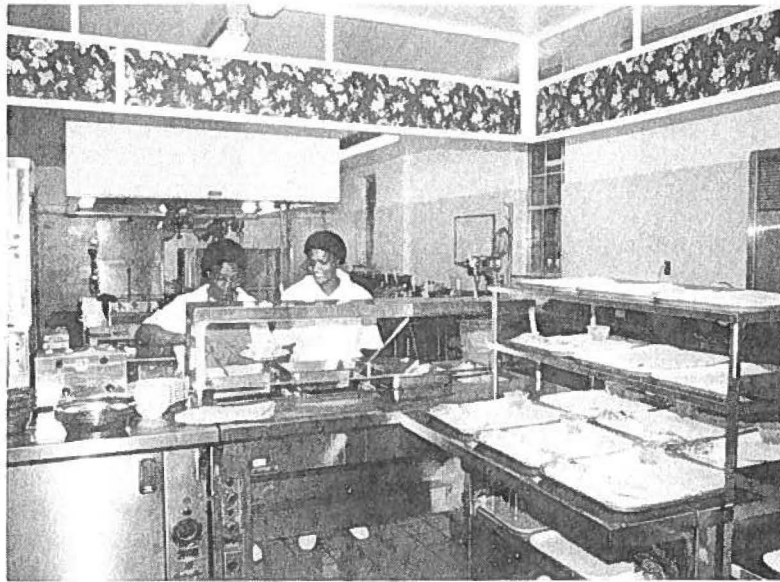


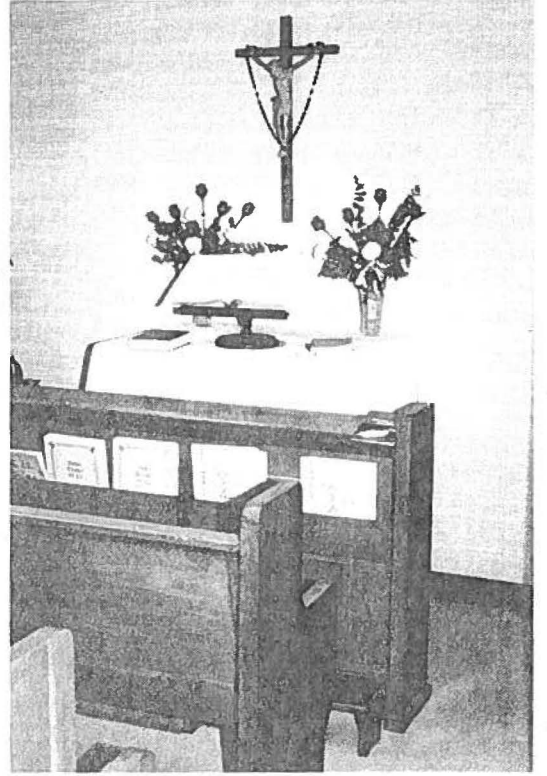


Pointe Coupee General Hospital



Pointe Coupee General Hospital







POINTE COUPEE GENERAL HOSPITAL
2202 False River Drive
New Roads, Louisiana 70760
Telephone: (504) 638-6331